



YOKOHAMA

WINTER TYRE CATALOGUE/EN 2023/2024

▶ PCR / SUV / LIGHT COMMERCIAL VEHICLES + ALL SEASON



This is YOKOHAMA

The Global Tyre Brand since 1917

The YOKOHAMA Rubber Group is composed of the YOKOHAMA Rubber Co., Ltd. and 110 subsidiaries, and 34 affiliates around the world.

Original Equipment

YOKOHAMA tyres have been adopted worldwide by car manufacturers with a global reputation and in a wide range of vehicle categories, being the Tyre supplier for premium cars.



Winning in Red and Black

Under the colours red and black, YOKOHAMA's range of ADVAN Tyres can supply the tyres for World Championships and International top level Motorsport competitions.

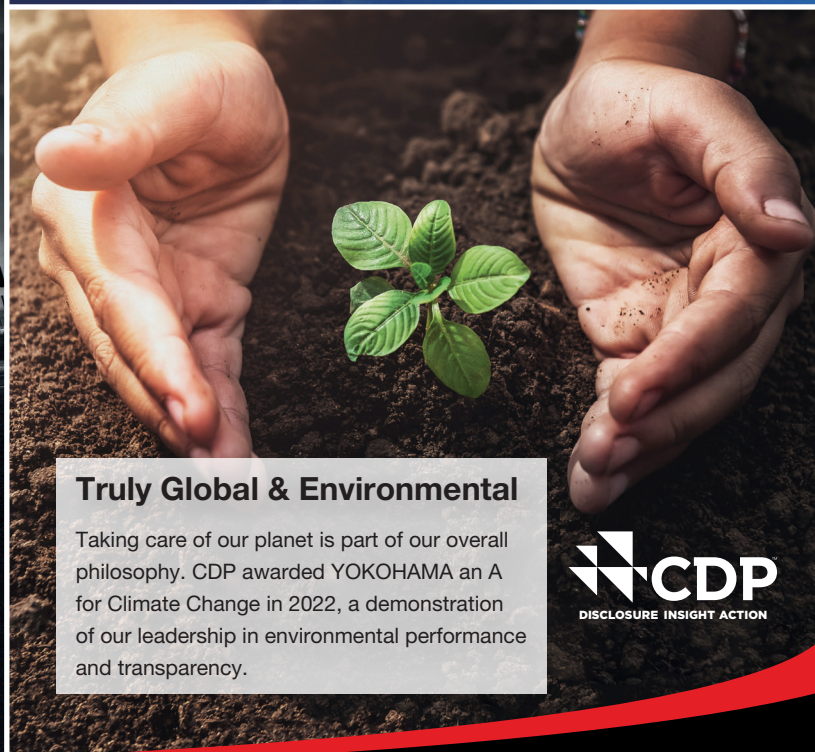


The BluEarth Concept

BluEarth. The Product Engineering Philosophy, which focuses on the idea of responsibility towards the Environment and Society constantly.



Our Philosophy, to keep the focus on the responsibility towards the Environment and Society.



Truly Global & Environmental

Taking care of our planet is part of our overall philosophy. CDP awarded YOKOHAMA an A for Climate Change in 2022, a demonstration of our leadership in environmental performance and transparency.



YOKOHAMA High Performance Winter Tyres



V906

BluEarth^{WINTER}
V906

For Passenger Cars



V906 SUV

BluEarth^{WINTER}
V906 SUV

For SUVs



V905

BluEarth^{WINTER}
V905

For Passenger Cars and SUVs



V903

V903

For Passenger Cars

YOKOHAMA Light Commercial Vehicle Tyres



WY01

WY01

For Van and Light Commercial Vehicles

YOKOHAMA All Season Tyres



AW21

BluEarth-4S^{AW21}

All Season Tyres for Passenger Cars and SUVs



RY61

BluEarth-Van All Season^{RY61}

All Season Tyres for Vans and Light Commercial Vehicles

The availability of products and the special size range offered can vary from country to country.

For detailed Information about the available products and sizes offered in your country, the EU Tyre Label, tyre labeling data and further technical data, please see the corresponding sections in this catalogue or price list respectively or contact your local distributor or dealer. For basic information, you can also refer to the YOKOHAMA website www.yokohama.eu (not for country specific product and size availability).

Winter Traction



Please see table section for available sizes.

V906

BluEarth*WINTER V906



Maximum speed
 270 km/h in case of W speed symbol
 240 km/h in case of V speed symbol
 210 km/h in case of H speed symbol
 190 km/h in case of T speed symbol
 (Speed symbol varies depending on size)

Application: Compact Cars, Middle sized cars

Benefits

- Aiming to reduce the risk of aquaplaning
- Designed for Mileage

Features

- Harmony Tread Design Concept
- Super rich-silica compound
- Robust Construction

Harmony Tread Design Concept



Smooth V-Shaped Groove

Smooth-angled V-shape helps displace water and snow. This to reduce the risk of aquaplaning.

Uniform Pressure Blocks

Each block is positioned in a uniform manner. The pressure from the ground is spread evenly.

Widespread 3-D Sipe

The 3-D sipes are spread out widely from block to block to enhance the edge effect on snow.

EU Label Range	
Fuel Efficiency Class	C-D
Wet Grip Class	B-C
External Rolling Noise Class and Measured Value (dB)	B 70-73
Series: 65% - 30%	Inches: 15-22

These values are for the full size range of this product. The special size range offered can vary from country to country. For detailed information on the sizes offered and the relevant parameters in your country, please refer to the table section.

Some Sizes are waiting for final labeling results.

SUV Tyres

Traction inspires Confidence



Please see table section for available sizes.

V906 SUV

BluEarth*WINTER V906 SUV



Maximum speed
 270 km/h in case of W speed symbol
 240 km/h in case of V speed symbol
 210 km/h in case of H speed symbol
 190 km/h in case of T speed symbol
 (Speed symbol varies depending on size)

Application: Modern SUVs & CUVs

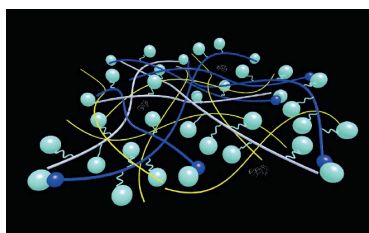
Benefits

- Designed for Mileage
- Super Rich-Silica Compound for snow and wet performance

Features

- Harmony Tread Design Concept
- Super rich-silica compound
- Robust Construction

Super Rich-Silica Compound



- A large amount of silica is used to contribute to the wet performance.
- Snow polymer is blended for snow performance.

EU Label Range	
Fuel Efficiency Class	C-D
Wet Grip Class	B
External Rolling Noise Class and Measured Value (dB)	B 70-75
Series: 70% - 30%	Inches: 16-23

These values are for the full size range of this product. The special size range offered can vary from country to country. For detailed information on the sizes offered and the relevant parameters in your country, please refer to the table section.

Some Sizes are waiting for final labeling results.

Winter Tyre for Passenger Cars and SUVs



BluEarth*WINTER V905



Maximum speed
 270 km/h in case of W speed symbol
 240 km/h in case of V speed symbol
 210 km/h in case of H speed symbol
 190 km/h in case of T speed symbol
 (Speed symbol varies depending on size)

EU Label Range	
Fuel Efficiency Class	C-D
Wet Grip Class	C
External Rolling Noise Class and Measured Value (dB)	B 71-74
Series: 80% - 30%	Inches: 15-22

These values are for the full size range of this product. The special size range offered can vary from country to country. For detailed information on the sizes offered and the relevant parameters in your country, please refer to the table section.

V905

Please see table section for available sizes.

Application: Performance cars, SUVs, middle sized cars

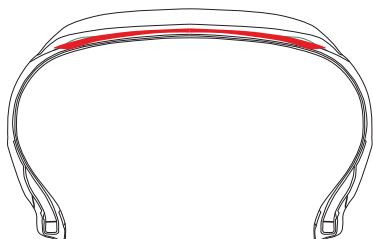
Benefits

- Zig-zag grooves for better drainage
- Drainage performance on snow & wet
- Directional pattern

Features

- Wide slanting grooves and variable angle of lateral grooves
- Low-heat-generating under tread

Under Tread Compound



Low-heat-generating under tread, reduces energy-loss by sustaining rigidity.

Zig-Zag Straight Grooves and variable angle of Lateral Grooves



Improved lateral stabilities such as turning and anti-sliding on snow.

Wide Slanting Grooves



For better drainage

Winter is inspiration



V903

V903

M+S


Maximum speed
 210 km/h in case of H speed symbol
 190 km/h in case of T speed symbol
 (Speed symbol varies depending on size)

EU Label Range

Fuel Efficiency Class	E
Wet Grip Class	C
External Rolling Noise Class and Measured Value (dB)	B 70-71
Series: 80% - 45%	Inches: 13-16

These values are for the full size range of this product. The special size range offered can vary from country to country.

For detailed information on the sizes offered and the relevant parameters in your country, please refer to the table section.

Please see table section for available sizes.

Application: Small and compact cars

Benefits

- Directional pattern
- Better street contact due to groove in groove design

Features

- Original Multi-Layer Sipes
- 3-D shaped block wall with groove in groove design
- Zig-Zag shaped main straight grooves for better traction

Tread Pattern Design



The pattern design delivers clear-cut performance.

Directional Tread Design

- ① The directional tread pattern provides a "direct-feel" and drainage on wet road surfaces.

Original Multi-Layer Sipes

- ② YOKOHAMA's original multi-layer sipes maximise the edge effect on snowy road surfaces, keeping blocks stable despite the soft compound.

3-D Shaped Block Wall with Groove in Groove Design

- ③ The centralised rib-block with a 3-D shaped block wall delivers dry stability by supporting the contact surface. Micro-sized grooves on the 3-D shaped block wall control uneven wear by dispersing stress and heat.



Zig-Zag Shaped Main Straight Grooves

- ④ The Zig-Zag shaped main straight grooves provide traction with their grooved edge.

The One for All Seasons

BluEarth-4S AW21



AW21

Please see table section for available sizes.



Maximum speed
 300 km/h in case of Y speed symbol
 270 km/h in case of W speed symbol
 240 km/h in case of V speed symbol
 210 km/h in case of H speed symbol
 190 km/h in case of T speed symbol
 (Speed symbol varies depending on size)

EU Label Range	
Fuel Efficiency Class	C-E
Wet Grip Class	B-C
External Rolling Noise Class and Measured Value (dB)	B 70-73
Series: 70% - 35%	Inches: 14-21

These values are for the full size range of this product. The special size range offered can vary from country to country. For detailed information on the sizes offered and the relevant parameters in your country, please refer to the table section.

Some Sizes are waiting for final labeling results.

Application: Small and Compact cars, mid-size sedan, modern SUVs & CUVs

Benefits

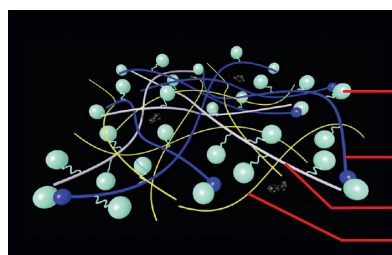
- All Season Tread Pattern Design
- For every day use and unfavourable road conditions

Features

- Divergent V-Groove
- Flat & Wide Contour
- Silica End-locked compound

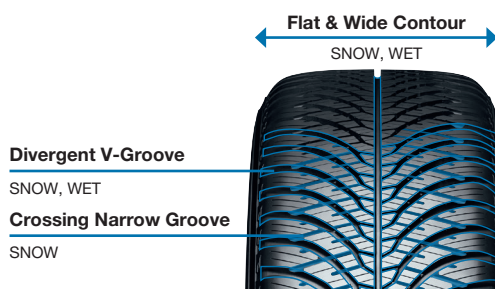
Compound

for SNOW/WET Performance



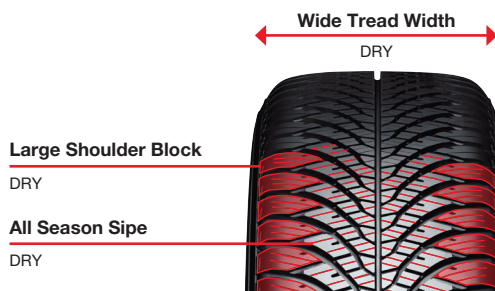
- Micro Silica
- Silica End-Locked Polymer
- Snow Grip Polymer
- Wet Grip Polymer

Tread Pattern Design
for SNOW/WET Performance



Driving on unfavourable road conditions

Tread Pattern Design
for DRY Performance



Driving at every day use

Strong and Smooth – Whatever the Weather

BluEarth-Van All Season RY61



RY61

Please see table section for available sizes.



Maximum speed
 210 km/h in case of H speed symbol
 190 km/h in case of T speed symbol
 170 km/h in case of R speed symbol
 (Speed symbol varies depending on size)

EU Label Range	
Fuel Efficiency Class	C-D
Wet Grip Class	A-B
External Rolling Noise Class and Measured Value (dB)	B 73
Series: 75 % - 55 %	Inches: 15 - 17

These values are for the full size range of this product. The special size range offered can vary from country to country. For detailed information on the sizes offered and the relevant parameters in your country, please refer to the table section.

Application: Transporters, Light Commercial Vehicles, Cargos and Modern Vans

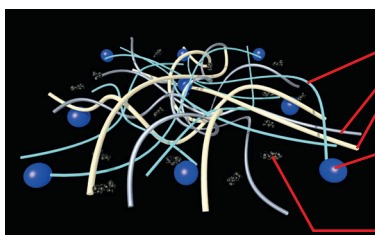
Benefits

- Long mileage and solid durability
- All Season Tread Pattern Design

Features

- Remarkable Tread Design
- Compound for toughness
- Construction: Bead Flipper

Compound

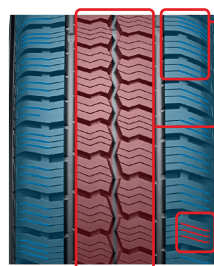


- Triple Polymer**
Strong & tough polymers for tread life. Resistance to uneven wear, cut and chip.
- Silica**
Large amount of silicas are used for Wet Performance and Rolling Resistance.
- Carbon**

Tread Pattern

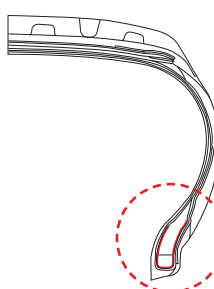


- Triple Wide & Deep Grooves**
Enhancing snow/water evacuation, for Snow and Wet Performance
- Center Zig-Zag Groove**
Creating edges to snow, crossing Wide Lugs creating shear force
- Straight Grooves**
For smooth water drainage



- Square Shoulder Block**
Wide Contact Area for cornering, preventing irregular wear by high rigidity
- Tough Center Blocks**
Large Blocks placed in the center, creating rigidity and large contact area with ground, preventing irregular wear
- Snow Biting Sipes**
Scratch snow and improve snow performance

Construction



Bead Flipper

- For anti-burst**
- For driving stability**
- Prevents wear of bead & carcass in high load
- Keeps bead filler from falling

Durability and Confidence with Winter Performance for Light Commercial Vehicles

WY01



WY01



Maximum speed
 190 km/h in case of T speed symbol
 170 km/h in case of R speed symbol
 160 km/h in case of Q speed symbol
 (Speed symbol varies depending on size)

EU Label Range	
Fuel Efficiency Class	E
Wet Grip Class	B-C
External Rolling Noise Class and Measured Value (dB)	B 71-72
Series: 82% - 60%	Inches: 14-17

These values are for the full size range of this product. The special size range offered can vary from country to country. For detailed information on the sizes offered and the relevant parameters in your country, please refer to the table section.

Please see table section for available sizes.

Application: Transporters, Light Commercial Vehicles, Cargos and Modern Vans

Benefits

- Direct-feel and traction
- Remarkable durability performance

Features

- 3 wide grooves
- Traction Blocks with micro diagonal sipes
- Rigid shoulder rib with lug

Traction Blocks with Micro Diagonal Sipes



Providing “direct-feel” and “traction”. Diagonal Shallow slits on the tyre tread surface provide performance even in the break-in period.

3 Wide Grooves



Water evacuation provided by 3 wide grooves, even after long mileage.

Rigid Shoulder Rib with Lug



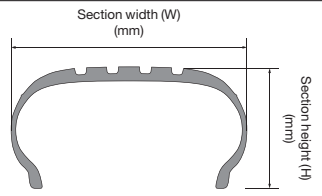
Moderating stiffness blocks help even wear for long mileage.

Technical Information/For Your Comfort & Safety

Aspect ratio

The aspect ratio is the ratio of a tyre's section height (H) to its section width (W).

$$\text{Aspect ratio (\%)} = \frac{H}{W} \times 100$$



Speed category symbol

The speed symbol refers to the maximum speed capabilities of the tyre. It is only valid for tyres that are properly inflated and loaded within their assigned load index.

Speed category symbol	Speed (km/h)
N	140
P	150
Q	160
R	170
S	180
T	190
H	210
V	240
W	270
Y	300
(Y)	over 300

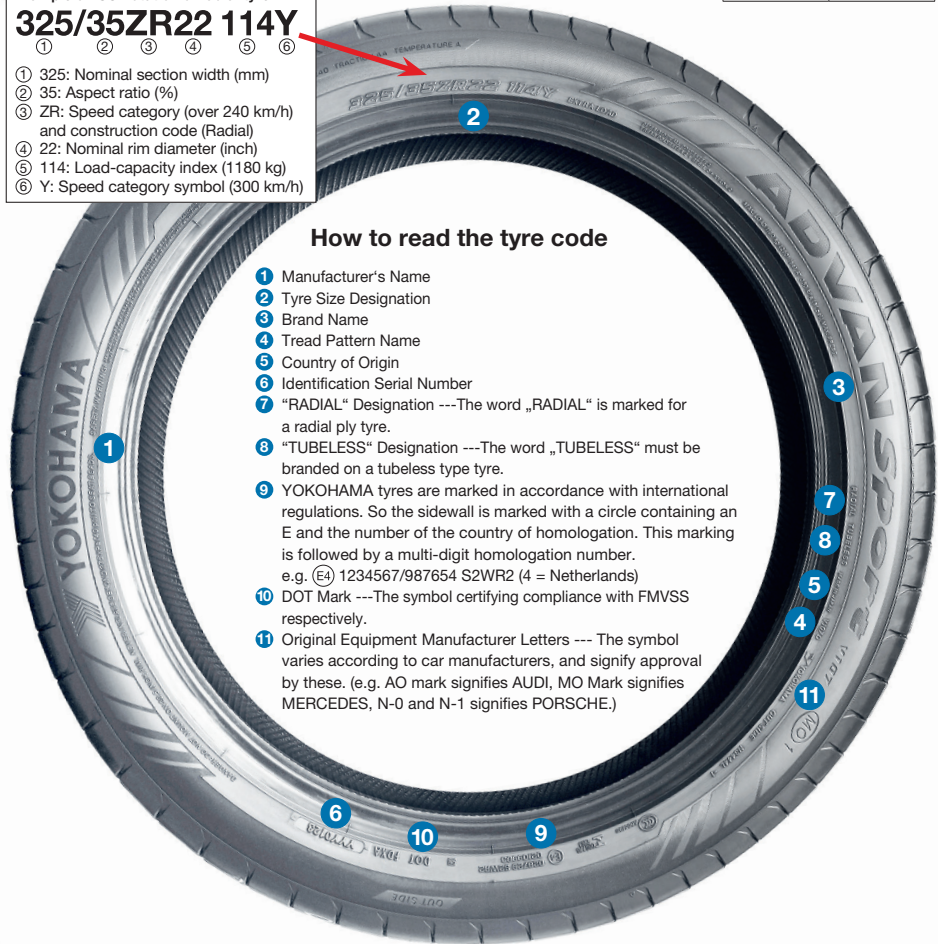
Load-capacity index

The load index is the maximum load-carrying capacity of a tyre under a specific condition.

LI	kg	LI	kg	LI	kg
61	257	81	462	101	825
62	265	82	475	102	850
63	272	83	487	103	875
64	280	84	500	104	900
65	290	85	515	105	925
66	300	86	530	106	950
67	307	87	545	107	975
68	315	88	560	108	1000
69	325	89	580	109	1030
70	335	90	600	110	1060
71	345	91	615	111	1090
72	355	92	630	112	1120
73	365	93	650	113	1150
74	375	94	670	114	1180
75	387	95	690	115	1215
76	400	96	710	116	1250
77	412	97	730	117	1285
78	425	98	750	118	1320
79	437	99	775	119	1360
80	450	100	800	120	1400
				121	1450
				122	1500
				123	1550

Example of ISO notation of radial tyre
325/35ZR22 114Y

- 325: Nominal section width (mm)
- 35: Aspect ratio (%)
- ZR: Speed category (over 240 km/h) and construction code (Radial)
- 22: Nominal rim diameter (inch)
- 114: Load-capacity index (1180 kg)
- Y: Speed category symbol (300 km/h)



How to read the tyre code

- 1 Manufacturer's Name
- 2 Tyre Size Designation
- 3 Brand Name
- 4 Tread Pattern Name
- 5 Country of Origin
- 6 Identification Serial Number
- 7 "RADIAL" Designation ---The word „RADIAL“ is marked for a radial ply tyre.
- 8 "TUBELESS" Designation ---The word „TUBELESS“ must be branded on a tubeless type tyre.
- 9 YOKOHAMA tyres are marked in accordance with international regulations. So the sidewall is marked with a circle containing an E and the number of the country of homologation. This marking is followed by a multi-digit homologation number. e.g. (E4) 1234567/987654 S2WR2 (4 = Netherlands)
- 10 DOT Mark ---The symbol certifying compliance with FMVSS respectively.
- 11 Original Equipment Manufacturer Letters --- The symbol varies according to car manufacturers, and signify approval by these. (e.g. AO mark signifies AUDI, MO mark signifies MERCEDES, N-0 and N-1 signifies PORSCHE.)

Reinforced (Extra Load) Indication

Passenger car tyres designed for loads and inflation pressures higher than the standard version.

Tyre rotation

Tyre rotation is the regular practice of changing the position of each tyre on the car to minimise abnormal (or uneven) tread wear, which may cause:

1. Abnormal vibration ("shimmy")
2. Tyre noise
3. Decreased riding comfort
4. Shorter tyre life

Note: We recommend that you rotate your tyres immediately if you recognise any of the above-mentioned conditions (especially on your front tyres).

Tyres suitable for severe snow conditions bear the snow grip pictogram ("3 Peak Mountain Snowflake") or "alpine" symbol that is also present on the sidewall of such tyres. Nordic winter tyres (tyre class C1) for use on iced surfaces will feature a symbol (ice grip pictogram) that represents an ice stalagmite.

- Never mount a tyre on a rim that is damaged or which has been repaired by welding or brazing.
- Never inflate beyond 275 kPa (2.75 bar, 40 psi) to seat beads.
- Tyre inflation should be done in a safety cage.
- Do not mix different tyre size designations or constructions on the same axle, except for limited use of temporary spare tyres.
- Outer diameter of wheel should be the same as inner diameter of tyre.
- Make sure to follow instructions in the car owner's manual or on the vehicle tyre information placard in the car to maintain proper tyre pressure (Particularly driving on a highway and/or when carrying heavy loads).
- Never bleed or reduce air pressure when tyres are hot from driving.
- Over- or under-inflation is dangerous and could lead to accidents or tyre damage.
- Check tyre inflation pressure (including spare tyre) at least once a month and before every long trip.
- Stones, gravel and other foreign objects stuck in the tyre treads may damage the tyre. Remove foreign objects from the tyre treads.
- Tyre should only be mounted by professionally trained persons.
- Objects in the road such as potholes, glass, metal, rocks, wood debris, kerbstones and such, which could damage a tyre should be safely avoided.
- To preserve traffic safety and tyre life, YOKOHAMA recommends driving safely and avoiding hard acceleration, braking or cornering in unnecessary situations.
- If you feel the car is unstable or feel any unusual noises or vibrations, stop your car in a safe place and inspect your tyres. Even if no visible defects are found, drive slowly and ask your tyre dealer to inspect your tyres as soon as possible.
- Winter tyres (studless, stud or snow tyres) should not be mixed with other types of tyres.

- New winter tyres should not be driven over 80 km/h for the first 100 km.
- When driving on winter roads, sudden starts and quick stops should be avoided, and a safe car-to-car driving distance should be maintained.
- When using tyre chains, be sure to use the proper size chains and affix with priority to the drive axle.
- Avoid driving with tyre chains for long distance on roads with no packed snow or ice.

The local regulations for the proper usage of Car Tyres may differ from country to country. Please make sure to check foreign regulations carefully, before going abroad. To preserve traffic safety, YOKOHAMA recommends driving substantially slower under adverse weather or road conditions.

Fuel saving and road safety depend heavily on the behaviour of drivers and in particular on the following: eco driving can significantly reduce fuel consumption; tyre pressure needs to be regularly checked to optimise fuel efficiency and wet grip; stopping distances must always be respected.

Ice grip tyres are specifically designed for road surfaces covered with ice and compact snow, and should only be used in very severe climate conditions (e.g. cold temperatures). Using ice grip tyres in less severe climate condition (e.g. wet conditions or warmer temperatures) could result in sub-optimal performance, in particular for wet grip, handling and wear.

Never use a tyre under the following conditions and replace tyres immediately:

- If the tread has worn to the tread wear indicator.
- If breaks in the fabric appear.
- If cords or wires are exposed.

Storage of steel belted radial tyres:

- Keep your tyres away from direct sunlight and locations with high temperature, high moisture, heavy electrical machinery, welders etc.
- Tyres should be preferably stored in a cool, dry, and dark room with a controlled environment.

Important notice for use of Runflat tyre (ZPS)

- A vehicle must be equipped with a tyre pressure monitoring system.
- After a low pressure warning has been indicated:
 - do not exceed 80 km/h (50 mph).
 - do not travel more than 80 km (50 miles).
 - do not re-inflate after run flat operation and do not repair.

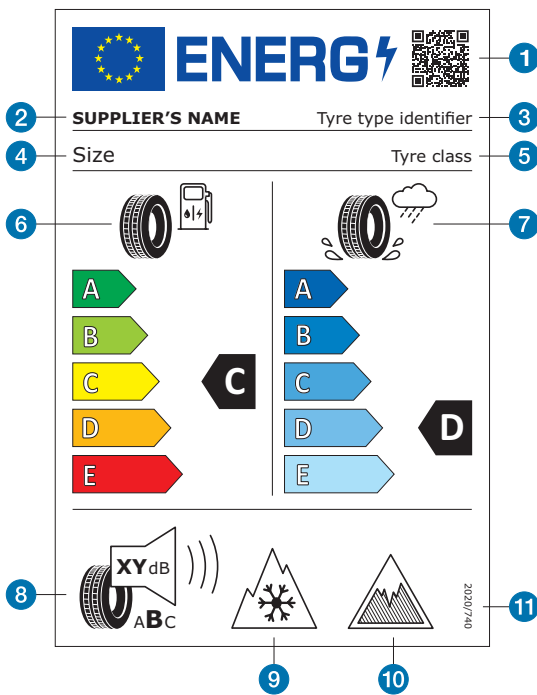
Tread Wear Indicator

Triangle marks(▲) on the sidewall show the tread groove position of the "tread wear indicators", the "tread wear indicators" represent 1.6 mm of remaining tread depth at which time the tyre should be replaced.

Constructions and specifications are subject to change with or without notice.

For information about the EU Tyre Label, tyre labelling data and further technical details, see the corresponding sections inside this catalogue or price list respectively. You can also refer to the YOKOHAMA website www.yokohama.eu (not for country specific product and size availability).

EU Tyre Label



- 1 QR Code
- 2 Trade name or trademark of the supplier
- 3 Tyre type identifier = Article number in case of YOKOHAMA
- 4 Tyre size designation, load capacity index and speed category symbol
- 5 Tyre class: i.e. C1, C2 or C3
- 6 Fuel efficiency pictogram, scale and performance class
- 7 Wet grip pictogram, scale and performance class
- 8 External rolling noise pictogram, value (expressed in dB and rounded to the nearest integer) and performance class
- 9 Snow grip pictogram
- 10 Ice grip pictogram (C1 tyres only)
- 11 The serial number of this Regulation: "2020/740"

Since 2012 the EU Tyre Energy Label provides a clear and common classification of tyre performance for rolling resistance, braking on wet surfaces and external noise. The labels help consumers make informed decisions when they are buying tyres as they can easily set their priority choice based on the parameters.

Regulation (EC) No 1222/2009 first introduced the obligation of placing car and van tyres on the EU market with a sticker showing the label. That regulation was repealed and replaced by Regulation (EU) 2020/740 with start of application on 1 May 2021. It established a framework for the provision of harmonised information on tyre parameters through labelling to allow end-users to make an informed decision when purchasing tyres, for the purpose of increasing economic and environmental efficiency of road transport by promoting fuel-efficient, safe tyres with low noise levels.

Tyres are no longer allowed in classes F and G for rolling resistance and for wet grip, which is why the new scale has only 5 classes (A to E). The new energy symbols better suggest that the fuel efficiency is applicable to both internal combustion vehicles and to electric ones. In the bottom part, the external rolling noise class is always indicated, including the measured value of external noise level in decibels.



Fuel Efficiency Class

The fuel efficiency class ranges from A (most efficient) to E (least efficient). A top class tyre has less rolling resistance and therefore requires less energy to move the vehicle. This translates into lower energy costs (fossil fuels or electricity).



Wet Grip Class

The wet grip describes a tyre's performance under wet conditions and its classes ranges as well from A (shorter braking distance on wet asphalt) to E (longest).



External Rolling Noise Class and Measured Value (dB)

The external rolling noise class ranges from A (less noise outside the vehicle) to C (highest noise). The external rolling noise, caused by tyres, is measured in decibels. This noise is different from the "cavity noise", which is the noise transmitted from the rims to the interior of the car.

Under the new regulation, in addition to the previous tyre label, there are also options for including an icon relating to grip on icy conditions and/or severe snow conditions in the bottom part of the tyre label (next to the external rolling noise pictogram) for tyres which satisfy the minimum snow grip index values or the relevant minimum ice grip index values.



Tyres suitable for severe snow conditions bear the snow grip pictogram ("3 Peak Mountain Snowflake") or "alpine" symbol that is also present on the sidewall of such tyres. Nordic winter tyres (tyre class C1) for use on iced surfaces will feature a symbol (ice grip pictogram) that represents an ice stalagmite.

The QR code, to read with a smartphone or other suitable reader, is intended to provide this and additional information for each individual tyre type identifier via a link to the public part of the new European product database for Energy Labelling (EPREL). A link to this database is also provided via the YOKOHAMA website (www.yokohama.eu). You can also get the information of the database in printed form from your tyre dealer.

Other components of the label are the trade name or the trade mark of the supplier, the tyre type identifier, the tyre size designation, the load-capacity index and the speed category symbol, the tyre class and furthermore the serial number of the regulation (in the bottom part of the tyre label).

PASSENGER CAR / SUV

Winter

Series	Inch	Tyre size designation	LI	SS	STD XL	Pattern	RPB	OE	See section "EU Tyre Label" for detailed information on the tyre labeling icons.				Category	Comments		
BluEarth*Winter V906 / BluEarth*Winter V906 SUV																
65	15	185/65R15	88	T	STD	BluEarth*Winter V906			D	C	B	71	√	-	C1	
		195/65R15	91	T	STD	BluEarth*Winter V906			D	B	B	71	√	-	C1	
60		195/65R15	91	H	STD	BluEarth*Winter V906			D	B	B	71	√	-	C1	
		195/65R15	95	T	XL	BluEarth*Winter V906			D	B	B	71	√	-	C1	
55		185/60R15	84	T	STD	BluEarth*Winter V906			D	C	B	71	√	-	C1	
		185/60R15	88	T	XL	BluEarth*Winter V906			D	C	B	71	√	-	C1	
70		185/55R15	86	H	XL	BluEarth*Winter V906			D	C	B	71	√	-	C1	
65		215/70R16	104	H	XL	BluEarth*Winter V906 SUV			•	•	•	•	√	-	C1	New
		205/65R16	95	H	STD	BluEarth*Winter V906			•	•	•	•	√	-	C1	New
60		215/65R16	98	H	STD	BluEarth*Winter V906			D	B	B	71	√	-	C1	
		205/60R16	92	H	STD	BluEarth*Winter V906			D	B	B	71	√	-	C1	
		205/60R16	96	H	XL	BluEarth*Winter V906			D	B	B	71	√	-	C1	
55	16	215/60R16	99	H	XL	BluEarth*Winter V906			D	B	B	71	√	-	C1	
		185/55R16	87	H	XL	BluEarth*Winter V906			•	•	•	•	√	-	C1	New
		195/55R16	87	H	STD	BluEarth*Winter V906			D	B	B	71	√	-	C1	
		205/55R16	91	T	STD	BluEarth*Winter V906			D	B	B	71	√	-	C1	
		205/55R16	91	H	STD	BluEarth*Winter V906			D	B	B	71	√	-	C1	
		205/55R16	94	H	XL	BluEarth*Winter V906			D	B	B	71	√	-	C1	
50		205/55R16	94	V	XL	BluEarth*Winter V906			D	B	B	71	√	-	C1	
		215/55R16	93	H	STD	BluEarth*Winter V906			D	B	B	71	√	-	C1	
45		185/50R16	81	H	STD	BluEarth*Winter V906	RPB		D	C	B	71	√	-	C1	
		195/50R16	88	H	XL	BluEarth*Winter V906	RPB		D	B	B	71	√	-	C1	
65		205/45R16	87	H	XL	BluEarth*Winter V906	RPB		D	B	B	71	√	-	C1	
		215/65R17	99	V	STD	BluEarth*Winter V906			D	B	B	71	√	-	C1	
60		225/65R17	102	H	STD	BluEarth*Winter V906 SUV			C	B	B	71	√	-	C1	
		225/65R17	106	H	XL	BluEarth*Winter V906 SUV			•	•	•	•	√	-	C1	New
		235/65R17	108	H	XL	BluEarth*Winter V906 SUV			C	B	B	70	√	-	C1	
55	17	195/60R17	90	H	STD	BluEarth*Winter V906			D	B	B	71	√	-	C1	
		215/60R17	96	H	STD	BluEarth*Winter V906 SUV			D	B	B	71	√	-	C1	
		225/60R17	99	H	STD	BluEarth*Winter V906			D	B	B	71	√	-	C1	
50		205/55R17	95	V	XL	BluEarth*Winter V906			D	B	B	71	√	-	C1	
		215/55R17	98	V	XL	BluEarth*Winter V906			D	B	B	71	√	-	C1	
		225/55R17	101	V	XL	BluEarth*Winter V906			C	B	B	71	√	-	C1	
		225/55R17	97	H	STD	BluEarth*Winter V906			D	B	B	71	√	-	C1	
45		235/55R17	103	V	XL	BluEarth*Winter V906 SUV			D	B	B	70	√	-	C1	
		205/50R17	93	V	XL	BluEarth*Winter V906	RPB		D	B	B	71	√	-	C1	
		215/50R17	95	V	XL	BluEarth*Winter V906	RPB		D	B	B	71	√	-	C1	
		225/50R17	98	V	XL	BluEarth*Winter V906	RPB		D	B	B	71	√	-	C1	
60		225/50R17	94	H	STD	BluEarth*Winter V906	RPB		D	B	B	71	√	-	C1	
		205/45R17	88	V	XL	BluEarth*Winter V906	RPB		•	•	•	•	√	-	C1	New
		225/45R17	91	H	STD	BluEarth*Winter V906	RPB		D	B	B	71	√	-	C1	
		225/45R17	94	H	XL	BluEarth*Winter V906	RPB		D	B	B	71	√	-	C1	
55		225/45R17	94	V	XL	BluEarth*Winter V906	RPB		D	B	B	71	√	-	C1	
		215/60R18	104	H	XL	BluEarth*Winter V906 SUV			C	B	B	71	√	-	C1	
50	18	235/60R18	103	T	STD	BluEarth*Winter V906 SUV			•	•	•	•	√	-	C1	New
		215/55R18	99	V	XL	BluEarth*Winter V906			D	B	B	71	√	-	C1	New
		225/55R18	102	V	XL	BluEarth*Winter V906 SUV			D	B	B	71	√	-	C1	
45		235/55R18	104	H	XL	BluEarth*Winter V906			D	B	B	70	√	-	C1	
		255/55R18	109	V	XL	BluEarth*Winter V906 SUV			•	•	•	•	√	-	C1	New
		225/50R18	95	V	STD	BluEarth*Winter V906	RPB		D	B	B	71	√	-	C1	
		225/50R18	99	V	XL	BluEarth*Winter V906	RPB		D	B	B	71	√	-	C1	
40		225/45R18	95	V	XL	BluEarth*Winter V906	RPB		D	B	B	71	√	-	C1	
		235/45R18	98	V	XL	BluEarth*Winter V906	RPB		D	B	B	70	√	-	C1	
		245/45R18	100	V	XL	BluEarth*Winter V906	RPB		D	B	B	70	√	-	C1	
40		225/40R18	92	W	XL	BluEarth*Winter V906	RPB		D	B	B	71	√	-	C1	
		245/40R18	97	W	XL	BluEarth*Winter V906	RPB		D	B	B	70	√	-	C1	
		285/40R18	105	V	XL	BluEarth*Winter V906	RPB		•	•	•	•	√	-	C1	New

Series	Inch	Tyre size designation	LI	SS	STD XL	Pattern	RPB	OE	See section "EU Tyre Label" for detailed information on the tyre labeling icons.				Category	Comments			
60	19	235/60R19	103	W	STD	BluEarth*Winter V906 SUV			D	B	B	70	√	-	C1		
55		205/55R19	97	V	XL	BluEarth*Winter V906 SUV			•	•	•	•	√	-	C1	New	
		235/55R19	105	V	XL	BluEarth*Winter V906			•	•	•	•	√	-	C1	New	
50		265/55R19	109	W	STD	BluEarth*Winter V906 SUV			•	•	•	•	√	-	C1	New	
		195/50R19	88	H	STD	BluEarth*Winter V906	RPB		D	B	B	71	√	-	C1		
		245/50R19	105	V	XL	BluEarth*Winter V906 SUV	RPB		D	B	B	70	√	-	C1		
45		225/45R19	96	V	XL	BluEarth*Winter V906	RPB		•	•	•	•	√	-	C1	New	
		245/45R19	102	V	XL	BluEarth*Winter V906	RPB		•	•	•	•	√	-	C1	New	
40		235/40R19	96	V	XL	BluEarth*Winter V906	RPB		D	B	B	70	√	-	C1		
		245/40R19	98	V	XL	BluEarth*Winter V906	RPB		•	•	•	•	√	-	C1	New	
35		275/35R19	100	V	XL	BluEarth*Winter V906	RPB		D	B	B	73	√	-	C1		
		295/35R19	104	V	XL	BluEarth*Winter V906	RPB		•	•	•	•	√	-	C1	New	
60		20	265/60R20	112	H	STD	BluEarth*Winter V906 SUV			•	•	•	•	√	-	C1	New
55			235/55R20	102	V	STD	BluEarth*Winter V906 SUV			D	B	B	70	√	-	C1	
50			235/50R20	104	V	XL	BluEarth*Winter V906 SUV	RPB		C	B	B	70	√	-	C1	
			275/50R20	113	V	XL	BluEarth*Winter V906 SUV	RPB		C	B	B	73	√	-	C1	
45			255/45R20	105	V	XL	BluEarth*Winter V906	RPB		D	B	B	73	√	-	C1	
			265/45R20	108	V	XL	BluEarth*Winter V906 SUV	RPB		D	B	B	73	√	-	C1	
			275/45R20	110	V	XL	BluEarth*Winter V906 SUV	RPB		C	B	B	73	√	-	C1	
40	255/40R20		101	W	XL	BluEarth*Winter V906	RPB		D	B	B	73	√	-	C1		
	285/40R20		108	V	XL	BluEarth*Winter V906	RPB		•	•	•	•	√	-	C1	New	
	305/40R20		112	V	XL	BluEarth*Winter V906 SUV	RPB		C	B	B	73	√	-	C1		
35	265/35R20		99	W	XL	BluEarth*Winter V906	RPB		•	•	•	•	√	-	C1	New	
30	295/30R20		101	W	XL	BluEarth*Winter V906	RPB		•	•	•	•	√	-	C1	New	
45	21		285/45R21	113	V	XL	BluEarth*Winter V906 SUV	RPB		•	•	•	•	√	-	C1	New
40			285/40R21	109	W	XL	BluEarth*Winter V906 SUV	RPB		D	B	B	73	√	-	C1	
			295/40R21	111	V	XL	BluEarth*Winter V906 SUV	RPB		C	B	B	73	√	-	C1	
			275/40R22	107	V	XL	BluEarth*Winter V906	RPB		•	•	•	•	√	-	C1	New
35			285/40R22	110	W	XL	BluEarth*Winter V906 SUV	RPB		D	B	B	73	√	-	C1	
	285/35R22		106	W	XL	BluEarth*Winter V906 SUV	RPB		D	B	B	74	√	-	C1		
	315/35R22		111	V	XL	BluEarth*Winter V906 SUV	RPB		•	•	•	•	√	-	C1	New	
30	325/35R22	114	W	XL	BluEarth*Winter V906 SUV	RPB		D	B	B	75	√	-	C1			
30	315/30R22	107	W	XL	BluEarth*Winter V906 SUV	RPB		D	B	B	74	√	-	C1			
35	23	275/35R23	104	V	XL	BluEarth*Winter V906 SUV	RPB		•	•	•	•	√	-	C1	New	
30		315/30R23	108	V	XL	BluEarth*Winter V906 SUV	RPB		•	•	•	•	√	-	C1	New	

BluEarth*Winter V905

80	15	195/80R15	96	T	STD	BluEarth*Winter V905			D	C	B	71	√	-	C1	
		215/80R15	102	T	STD	BluEarth*Winter V905			C	C	B	72	√	-	C1	
70		205/70R15	96	T	STD	BluEarth*Winter V905			C	C	B	72	√	-	C1	
		225/70R15	100	T	STD	BluEarth*Winter V905			C	C	B	72	√	-	C1	
65		265/70R15	112	T	STD	BluEarth*Winter V905			C	C	B	73	√	-	C1	
		205/65R15	94	H	STD	BluEarth*Winter V905			C	C	B	72	√	-	C1	
		215/65R15	96	H	STD	BluEarth*Winter V905			C	C	B	72	√	-	C1	
60		195/60R15	88	T	STD	BluEarth*Winter V905			D	C	B	72	√	-	C1	
		205/60R15	91	H	STD	BluEarth*Winter V905			D	C	B	72	√	-	C1	
55		195/55R15	85	H	STD	BluEarth*Winter V905	RPB		D	C	B	72	√	-	C1	
		205/55R15	88	T	STD	BluEarth*Winter V905	RPB		D	C	B	72	√	-	C1	
50		195/50R15	82	H	STD	BluEarth*Winter V905	RPB		D	C	B	72	√	-	C1	
80		205/80R16	104	T	XL	BluEarth*Winter V905			C	C	B	72	√	-	C1	
		215/80R16	103	T	STD	BluEarth*Winter V905			C	C	B	72	√	-	C1	
		235/80R16	109	T	STD	BluEarth*Winter V905			C	C	B	72	√	-	C1	

LI = Load Index Capacity SS = Speed Category Symbol STD = Normal Load Capacity XL = Extra Load RPB = Rim Protection Bar YOKOHAMA OE = Original Equipment

Category = C1: Passenger car tyres, C2: Light commercial vehicle tyres, C3: Heavy commercial vehicle tyres

√ = Tyre bears this pictogram, symbol or mark - = Tyre does not bear this pictogram, symbol or mark

• = Values for products in preparation (i.p.) will be published on www.yokohama.eu with the start of production.

See page "Technical Information / For your Comfort & Safety" about how to read the tyre code, technical details and recommendations for safe driving.

For information about the start and end date of production of available tyres, information about the tyre type identifier and further technical aspects, please refer to the official product information sheet, which can be provided to you by your tyre dealer. A link to the public part of the European product database for Energy Labelling (EPREL), where you can access the product information sheet and the EU tyre label, is also provided via the YOKOHAMA website (www.yokohama.eu).

PASSENGER CAR / SUV

Winter

Series	Inch	Tyre size designation	LI	SS	STD XL	Pattern	RPB	OE	See section "EU Tyre Label" for detailed information on the tyre labeling icons.					Category	Comments
BluEarth*Winter V905															
70	16	215/70R16	100	T	STD	BluEarth*Winter V905			C	C	B	72	✓	-	C1
		225/70R16	107	H	XL	BluEarth*Winter V905			C	C	B	72	✓	-	C1
		235/70R16	106	T	STD	BluEarth*Winter V905			C	C	B	72	✓	-	C1
		245/70R16	107	T	STD	BluEarth*Winter V905			C	C	B	72	✓	-	C1
		265/70R16	112	T	STD	BluEarth*Winter V905			C	C	B	73	✓	-	C1
		275/70R16	114	T	STD	BluEarth*Winter V905			C	C	B	73	✓	-	C1
60	16	195/60R16	89	H	STD	BluEarth*Winter V905			D	C	B	72	✓	-	C1
		225/60R16	102	H	XL	BluEarth*Winter V905			C	C	B	72	✓	-	C1
		235/60R16	100	H	STD	BluEarth*Winter V905			C	C	B	72	✓	-	C1
65	16	225/65R16	100	H	STD	BluEarth*Winter V905			C	C	B	72	✓	-	C1
		255/65R16	109	H	STD	BluEarth*Winter V905			C	C	B	73	✓	-	C1
55	16	225/55R16	99	H	XL	BluEarth*Winter V905	RPB		C	C	B	72	✓	-	C1
		225/55R16	95	H	STD	BluEarth*Winter V905	RPB		D	C	B	72	✓	-	C1
		215/55R16	97	V	XL	BluEarth*Winter V905	RPB		C	C	B	72	✓	-	C1
		215/55R16	97	H	XL	BluEarth*Winter V905	RPB		C	C	B	72	✓	-	C1
		225/55R16	99	V	XL	BluEarth*Winter V905	RPB		D	C	B	72	✓	-	C1
65	17	225/65R17	106	H	XL	BluEarth*Winter V905			C	C	B	72	✓	-	C1
		255/65R17	110	H	STD	BluEarth*Winter V905			C	C	B	73	✓	-	C1
		265/65R17	112	T	STD	BluEarth*Winter V905			C	C	B	73	✓	-	C1
60	17	235/60R17	102	H	STD	BluEarth*Winter V905			C	C	B	72	✓	-	C1
		255/60R17	106	H	STD	BluEarth*Winter V905			C	C	B	73	✓	-	C1
55	17	245/55R17	102	V	STD	BluEarth*Winter V905	RPB		C	C	B	72	✓	-	C1
50		205/50R17	93	H	XL	BluEarth*Winter V905	RPB		C	C	B	72	✓	-	C1
45	17	225/50R17	98	H	XL	BluEarth*Winter V905	RPB		C	C	B	72	✓	-	C1
		205/45R17	88	V	XL	BluEarth*Winter V905	RPB		D	C	B	72	✓	-	C1
		215/45R17	91	V	XL	BluEarth*Winter V905	RPB		D	C	B	72	✓	-	C1
		235/45R17	94	H	STD	BluEarth*Winter V905	RPB		D	C	B	72	✓	-	C1
		235/45R17	97	V	XL	BluEarth*Winter V905	RPB		C	C	B	72	✓	-	C1
40	17	245/45R17	99	V	XL	BluEarth*Winter V905	RPB		D	C	B	72	✓	-	C1
215/40R17		87	V	XL	BluEarth*Winter V905	RPB		D	C	B	72	✓	-	C1	
60	18	225/60R18	100	H	STD	BluEarth*Winter V905			C	C	B	72	✓	-	C1
		225/60R18	104	V	XL	BluEarth*Winter V905			C	C	B	72	✓	-	C1
		235/60R18	107	H	XL	BluEarth*Winter V905			C	C	B	72	✓	-	C1
		255/60R18	112	H	XL	BluEarth*Winter V905			C	C	B	73	✓	-	C1
		265/60R18	110	H	STD	BluEarth*Winter V905			C	C	B	73	✓	-	C1
		285/60R18	116	H	STD	BluEarth Winter V905			C	C	B	74	✓	-	C1
55	18	215/55R18	95	V	STD	BluEarth Winter V905	RPB		C	C	B	72	✓	-	C1
		215/55R18	99	V	XL	BluEarth*Winter V905	RPB		C	C	B	72	✓	-	C1
		225/55R18	98	V	STD	BluEarth*Winter V905	RPB		D	C	B	72	✓	-	C1
		235/55R18	100	V	STD	BluEarth*Winter V905	RPB		C	C	B	72	✓	-	C1
		255/55R18	109	V	XL	BluEarth*Winter V905	RPB		C	C	B	73	✓	-	C1
50	18	215/50R18	92	V	STD	BluEarth*Winter V905	RPB		D	C	B	72	✓	-	C1
		235/50R18	101	V	XL	BluEarth*Winter V905	RPB		C	C	B	72	✓	-	C1
		245/50R18	104	V	XL	BluEarth*Winter V905	RPB		C	C	B	72	✓	-	C1
45	18	215/45R18	93	V	XL	BluEarth*Winter V905	RPB		D	C	B	72	✓	-	C1
		255/45R18	103	V	XL	BluEarth*Winter V905	RPB		C	C	B	73	✓	-	C1
40	18	215/40R18	89	V	XL	BluEarth*Winter V905	RPB		D	C	B	72	✓	-	C1
		235/40R18	95	W	XL	BluEarth*Winter V905	RPB		D	C	B	72	✓	-	C1
		255/40R18	99	V	XL	BluEarth*Winter V905	RPB		C	C	B	73	✓	-	C1
35	18	265/35R18	97	V	XL	BluEarth*Winter V905	RPB		D	C	B	71	✓	-	C1
55		19	225/55R19	99	V	STD	BluEarth*Winter V905	RPB		C	C	B	72	✓	-
235/55R19	101		V	STD	BluEarth*Winter V905	RPB		C	C	B	72	✓	-	C1	
235/55R19	105		V	XL	BluEarth*Winter V905	RPB		C	C	B	72	✓	-	C1	
255/55R19	111		V	XL	BluEarth*Winter V905	RPB		C	C	B	73	✓	-	C1	

Series	Inch	Tyre size designation	LI	SS	STD XL	Pattern	RPB	OE	See section "EU Tyre Label" for detailed information on the tyre labeling icons.						Category	Comments
50		235/50R19	103	V	XL	BluEarth*Winter V905	RPB		C	C	B	72	√	-	C1	
		245/50R19	105	V	XL	BluEarth*Winter V905 ZPS	RPB		D	C	B	71	√	-	C1	
		255/50R19	107	V	XL	BluEarth*Winter V905	RPB		C	C	B	73	√	-	C1	
		265/50R19	110	V	XL	BluEarth*Winter V905	RPB		C	C	B	73	√	-	C1	
45		225/45R19	96	V	XL	BluEarth*Winter V905	RPB		D	C	B	72	√	-	C1	
		235/45R19	99	V	XL	BluEarth*Winter V905	RPB		C	C	B	72	√	-	C1	
		245/45R19	102	W	XL	BluEarth*Winter V905	RPB		C	C	B	72	√	-	C1	
		255/45R19	104	V	XL	BluEarth*Winter V905	RPB		C	C	B	73	√	-	C1	
40	19	275/45R19	108	V	XL	BluEarth*Winter V905	RPB		C	C	B	73	√	-	C1	
		285/45R19	111	V	XL	BluEarth*Winter V905	RPB		C	C	B	74	√	-	C1	
		225/40R19	93	W	XL	BluEarth*Winter V905	RPB		D	C	B	72	√	-	C1	
		245/40R19	98	V	XL	BluEarth*Winter V905	RPB		C	C	B	72	√	-	C1	
35	19	255/40R19	100	V	XL	BluEarth*Winter V905	RPB		C	C	B	73	√	-	C1	
		265/40R19	102	W	XL	BluEarth*Winter V905	RPB		C	C	B	73	√	-	C1	
		275/40R19	105	W	XL	BluEarth*Winter V905	RPB		C	C	B	73	√	-	C1	
		285/40R19	107	W	XL	BluEarth*Winter V905	RPB		C	C	B	74	√	-	C1	
30	19	225/35R19	88	W	XL	BluEarth*Winter V905	RPB		D	C	B	71	√	-	C1	
		235/35R19	91	W	XL	BluEarth*Winter V905	RPB		D	C	B	71	√	-	C1	
		255/35R19	96	W	XL	BluEarth*Winter V905	RPB		D	C	B	71	√	-	C1	
		265/35R19	98	W	XL	BluEarth*Winter V905	RPB		D	C	B	71	√	-	C1	
50	20	285/35R19	103	W	XL	BluEarth*Winter V905	RPB		C	C	B	74	√	-	C1	
		255/50R20	109	V	XL	BluEarth*Winter V905	RPB		C	C	B	73	√	-	C1	
		265/50R20	111	V	XL	BluEarth*Winter V905	RPB		C	C	B	73	√	-	C1	
		245/45R20	103	V	XL	BluEarth*Winter V905	RPB		C	C	B	72	√	-	C1	
40	20	245/40R20	99	V	XL	BluEarth*Winter V905	RPB		C	C	B	71	√	-	C1	
		265/40R20	104	V	XL	BluEarth*Winter V905	RPB		C	C	B	73	√	-	C1	
		275/40R20	106	V	XL	BluEarth*Winter V905	RPB		D	C	B	73	√	-	C1	
		295/40R20	110	V	XL	BluEarth*Winter V905	RPB		C	C	B	74	√	-	C1	
35	20	265/35R20	99	V	XL	BluEarth*Winter V905	RPB		D	C	B	71	√	-	C1	
		315/35R20	110	V	XL	BluEarth*Winter V905	RPB		D	C	B	74	√	-	C1	
30	20	285/30R20	99	W	XL	BluEarth*Winter V905	RPB		D	C	B	74	√	-	C1	
45	21	275/45R21	110	V	XL	BluEarth*Winter V905	RPB		C	C	B	73	√	-	C1	
40	21	245/40R21	100	V	XL	BluEarth*Winter V905	RPB		C	C	B	71	√	-	C1	
		265/40R21	105	V	XL	BluEarth*Winter V905	RPB		C	C	B	73	√	-	C1	
		275/40R21	107	W	XL	BluEarth*Winter V905	RPB		C	C	B	72	√	-	C1	
		315/40R21	115	V	XL	BluEarth*Winter V905	RPB		C	C	B	74	√	-	C1	
35	21	285/35R21	105	V	XL	BluEarth*Winter V905	RPB		D	C	B	74	√	-	C1	
		295/35R21	107	V	XL	BluEarth*Winter V905	RPB		C	C	B	74	√	-	C1	
		315/35R21	111	W	XL	BluEarth*Winter V905	RPB		C	C	B	74	√	-	C1	
30	22	325/30R21	108	V	XL	BluEarth*Winter V905	RPB		D	C	B	74	√	-	C1	
		295/30R22	103	V	XL	BluEarth*Winter V905	RPB		D	C	B	74	√	-	C1	
YOKOHAMA V903																
80	13	155/80R13	79	T	STD	YOKOHAMA V903			E	C	B	70	√	-	C1	
70		155/70R13	75	T	STD	YOKOHAMA V903			E	C	B	70	√	-	C1	
65		155/65R13	73	T	STD	YOKOHAMA V903			E	C	B	70	√	-	C1	
70	14	165/70R14	81	T	STD	YOKOHAMA V903			E	C	B	70	√	-	C1	
		175/70R14	88	T	XL	YOKOHAMA V903			E	C	B	70	√	-	C1	
65	14	155/65R14	75	T	STD	YOKOHAMA V903			E	C	B	70	√	-	C1	
		165/65R14	79	T	STD	YOKOHAMA V903			E	C	B	70	√	-	C1	
		175/65R14	82	T	STD	YOKOHAMA V903			E	C	B	70	√	-	C1	

LI = Load Index Capacity SS = Speed Category Symbol STD = Normal Load Capacity XL = Extra Load RPB = Rim Protection Bar YOKOHAMA OE = Original Equipment

Category = C1: Passenger car tyres, C2: Light commercial vehicle tyres, C3: Heavy commercial vehicle tyres

ZPS = Zero Pressure System (Runflat Tyre Characteristics) √ = Tyre bears this pictogram, symbol or mark - = Tyre does not bear this pictogram, symbol or mark

● = Values for products in preparation (i.p.) will be published on www.yokohama.eu with the start of production.

See page "Technical Information / For your Comfort & Safety" about how to read the tyre code, technical details and recommendations for safe driving.

For information about the start and end date of production of available tyres, information about the tyre type identifier and further technical aspects, please refer to the official product information sheet, which can be provided to you by your tyre dealer. A link to the public part of the European product database for Energy Labelling (EPREL), where you can access the product information sheet and the EU tyre label, is also provided via the YOKOHAMA website (www.yokohama.eu).

PASSENGER CAR

Winter

Series	Inch	Tyre size designation	LI	SS	STD XL	Pattern	RPB	OE	See section "EU Tyre Label" for detailed information on the tyre labeling icons.				Category	Comments		
YOKOHAMA V903																
65	14	175/65R14	86	T	XL	YOKOHAMA V903			E	C	B	70	√	-	C1	
		185/65R14	86	T	STD	YOKOHAMA V903			E	C	B	70	√	-	C1	
60		185/60R14	82	T	STD	YOKOHAMA V903			E	C	B	70	√	-	C1	
65		175/65R15	84	T	STD	YOKOHAMA V903			E	C	B	70	√	-	C1	
		185/65R15	92	T	XL	YOKOHAMA V903			E	C	B	70	√	-	C1	
60	15	155/60R15	74	T	STD	YOKOHAMA V903			E	C	B	70	√	-	C1	
		165/60R15	77	T	STD	YOKOHAMA V903			E	C	B	70	√	-	C1	
		175/60R15	81	T	STD	YOKOHAMA V903			E	C	B	70	√	-	C1	
55		175/55R15	77	T	STD	YOKOHAMA V903			E	C	B	70	√	-	C1	
60	16	175/60R16	82	H	STD	YOKOHAMA V903			E	C	B	70	√	-	C1	
45		195/45R16	84	H	XL	YOKOHAMA V903	RPB		E	C	B	71	√	-	C1	




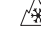
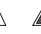

PASSENGER CAR / SUV

All Season

Series	Inch	Tyre size designation	LI	SS	STD XL	Pattern	RPB	OE	See section "EU Tyre Label" for detailed information on the tyre labeling icons.				Category	Comments		
BluEarth-4S AW21																
65	14	175/65R14	82	T	STD	BluEarth-4S AW21			D	C	B	70	√	-	C1	
60		185/60R14	82	H	STD	BluEarth-4S AW21			D	C	B	70	√	-	C1	
65		175/65R15	84	H	STD	BluEarth-4S AW21			D	C	B	70	√	-	C1	
		185/65R15	88	H	STD	BluEarth-4S AW21			D	C	B	70	√	-	C1	
		185/65R15	92	V	XL	BluEarth-4S AW21			D	C	B	70	√	-	C1	
60	15	195/65R15	91	H	STD	BluEarth-4S AW21			D	B	B	70	√	-	C1	
		185/60R15	88	H	XL	BluEarth-4S AW21			D	C	B	70	√	-	C1	
		195/60R15	88	H	STD	BluEarth-4S AW21			D	B	B	72	√	-	C1	
		195/60R15	92	V	XL	BluEarth-4S AW21			D	B	B	72	√	-	C1	
		185/55R15	86	H	XL	BluEarth-4S AW21			D	C	B	71	√	-	C1	
55		195/55R15	89	V	XL	BluEarth-4S AW21			D	B	B	72	√	-	C1	
50		195/50R15	82	H	STD	BluEarth-4S AW21	RPB		D	B	B	72	√	-	C1	
70		215/70R16	100	H	STD	BluEarth-4S AW21			D	B	B	72	√	-	C1	
65	16	215/65R16	98	H	STD	BluEarth-4S AW21			C	B	B	72	√	-	C1	
60		205/60R16	96	H	XL	BluEarth-4S AW21			D	B	B	72	√	-	C1	
		205/60R16	96	V	XL	BluEarth-4S AW21			D	B	B	72	√	-	C1	
60		215/60R16	99	H	XL	BluEarth-4S AW21			C	B	B	72	√	-	C1	
		215/60R16	99	V	XL	BluEarth-4S AW21			C	B	B	72	√	-	C1	
55		235/60R16	100	H	STD	BluEarth-4S AW21			C	B	B	72	√	-	C1	
		195/55R16	87	H	STD	BluEarth-4S AW21			D	B	B	72	√	-	C1	
		205/55R16	91	V	STD	BluEarth-4S AW21			D	B	B	72	√	-	C1	
		205/55R16	94	V	XL	BluEarth-4S AW21			D	B	B	72	√	-	C1	
55			215/55R16	97	V	XL	BluEarth-4S AW21			D	B	B	72	√	-	C1
	225/55R16		99	V	XL	BluEarth-4S AW21			C	B	B	72	√	-	C1	
	195/45R16		84	V	XL	BluEarth-4S AW21	RPB		D	B	B	72	√	-	C1	
45		215/45R16	90	V	XL	BluEarth-4S AW21	RPB		D	B	B	72	√	-	C1	

PASSENGER CAR / SUV

All Season

Series	Inch	Tyre size designation	LI	SS	STD XL	Pattern	RPB	OE	See section "EU Tyre Label" for detailed information on the tyre labeling icons.						Category	Comments
																
65		215/65R17	99	V	STD	BluEarth-4S AW21			C	B	B	72	√	-	C1	
		225/65R17	102	H	STD	BluEarth-4S AW21			C	B	B	72	√	-	C1	
		225/65R17	106	V	XL	BluEarth-4S AW21			C	B	B	72	√	-	C1	
		235/65R17	108	W	XL	BluEarth-4S AW21			C	B	B	72	√	-	C1	
60		215/60R17	100	V	XL	BluEarth-4S AW21			C	B	B	72	√	-	C1	
		225/60R17	103	V	XL	BluEarth-4S AW21			C	B	B	72	√	-	C1	
55	17	205/55R17	95	V	XL	BluEarth-4S AW21			D	B	B	72	√	-	C1	
		215/55R17	98	W	XL	BluEarth-4S AW21			C	B	B	72	√	-	C1	
		225/55R17	101	W	XL	BluEarth-4S AW21			C	B	B	72	√	-	C1	
		235/55R17	103	W	XL	BluEarth-4S AW21			C	B	B	72	√	-	C1	
50		205/50R17	93	V	XL	BluEarth-4S AW21	RPB		D	B	B	72	√	-	C1	
		215/50R17	95	W	XL	BluEarth-4S AW21	RPB		D	B	B	72	√	-	C1	
		225/50R17	98	V	XL	BluEarth-4S AW21	RPB		C	B	B	72	√	-	C1	
45		205/45R17	88	W	XL	BluEarth-4S AW21	RPB		D	B	B	72	√	-	C1	
		215/45R17	91	W	XL	BluEarth-4S AW21	RPB		D	B	B	72	√	-	C1	
		225/45R17	94	V	XL	BluEarth-4S AW21	RPB		D	B	B	72	√	-	C1	
		225/45R17	94	W	XL	BluEarth-4S AW21	RPB		D	B	B	72	√	-	C1	
		235/45R17	97	Y	XL	BluEarth-4S AW21	RPB		D	B	B	72	√	-	C1	
60		225/60R18	104	V	XL	BluEarth-4S AW21			C	B	B	72	√	-	C1	
		235/60R18	107	W	XL	BluEarth-4S AW21			C	B	B	72	√	-	C1	
55		215/55R18	99	V	XL	BluEarth-4S AW21			C	B	B	72	√	-	C1	
		225/55R18	98	V	STD	BluEarth-4S AW21			C	B	B	72	√	-	C1	
		235/55R18	100	V	STD	BluEarth-4S AW21			C	B	B	72	√	-	C1	
		255/55R18	109	W	XL	BluEarth-4S AW21			C	B	B	72	√	-	C1	
50	18	215/50R18	92	V	STD	BluEarth-4S AW21	RPB		●	●	●	●	√	-	C1	
		225/50R18	99	W	XL	BluEarth-4S AW21	RPB		●	●	●	●	√	-	C1	
		235/50R18	101	V	XL	BluEarth-4S AW21	RPB		C	B	B	72	√	-	C1	
45		225/45R18	95	Y	XL	BluEarth-4S AW21	RPB		D	B	B	72	√	-	C1	
		235/45R18	98	Y	XL	BluEarth-4S AW21	RPB		D	B	B	72	√	-	C1	
		245/45R18	100	Y	XL	BluEarth-4S AW21	RPB		C	B	B	72	√	-	C1	
40		225/40R18	92	W	XL	BluEarth-4S AW21	RPB		D	B	B	72	√	-	C1	
		235/40R18	95	Y	XL	BluEarth-4S AW21	RPB		D	B	B	72	√	-	C1	
		245/40R18	97	Y	XL	BluEarth-4S AW21	RPB		D	B	B	72	√	-	C1	
55		225/55R19	99	V	STD	BluEarth-4S AW21			C	B	B	72	√	-	C1	
		235/55R19	105	W	XL	BluEarth-4S AW21			C	B	B	72	√	-	C1	
		255/55R19	111	W	XL	BluEarth-4S AW21			C	B	B	73	√	-	C1	
		215/50R19	93	T	STD	BluEarth-4S AW21	RPB		D	B	B	72	√	-	C1	
50	19	255/50R19	107	W	XL	BluEarth-4S AW21	RPB		C	B	B	73	√	-	C1	
		225/45R19	96	V	XL	BluEarth-4S AW21	RPB		D	B	B	72	√	-	C1	
		235/45R19	99	W	XL	BluEarth-4S AW21	RPB		D	B	B	72	√	-	C1	
		245/40R19	98	Y	XL	BluEarth-4S AW21	RPB		●	●	●	●	√	-	C1	
35		225/35R19	88	W	XL	BluEarth-4S AW21	RPB		●	●	●	●	√	-	C1	
		235/35R19	91	Y	XL	BluEarth-4S AW21	RPB		●	●	●	●	√	-	C1	
50	20	235/50R20	104	W	XL	BluEarth-4S AW21	RPB		C	B	B	72	√	-	C1	
45		215/45R20	95	T	XL	BluEarth-4S AW21	RPB		D	B	B	72	√	-	C1	
35	21	295/35R21	107	W	XL	BluEarth-4S AW21	RPB		C	B	B	73	√	-	C1	

LI = Load Index Capacity SS = Speed Category Symbol STD = Normal Load Capacity XL = Extra Load RPB = Rim Protection Bar YOKOHAMA OE = Original Equipment

Category = C1: Passenger car tyres, C2: Light commercial vehicle tyres, C3: Heavy commercial vehicle tyres

√ = Tyre bears this pictogram, symbol or mark - = Tyre does not bear this pictogram, symbol or mark

● = Values for products in preparation (i.p.) will be published on www.yokohama.eu with the start of production.

See page "Technical Information / For your Comfort & Safety" about how to read the tyre code, technical details and recommendations for safe driving.

For information about the start and end date of production of available tyres, information about the tyre type identifier and further technical aspects, please refer to the official product information sheet, which can be provided to you by your tyre dealer. A link to the public part of the European product database for Energy Labelling (EPREL), where you can access the product information sheet and the EU tyre label, is also provided via the YOKOHAMA website (www.yokohama.eu).

VANS AND LIGHT COMMERCIAL VEHICLES

All Season

Series	Inch	Tyre size designation	LI	SS	STD XL	Pattern	RPB	OE	See section "EU Tyre Label" for detailed information on the tyre labeling icons.				Category	Comments		
BluEarth-Van All Season RY61																
70	15	195/70R15C	104/102	T		BluEarth-Van All Season RY61			D	B	B	73	√	-	C2	
		205/70R15C	106/104	R		BluEarth-Van All Season RY61			D	B	B	73	√	-	C2	
		215/70R15C	109/107	R		BluEarth-Van All Season RY61			C	B	B	73	√	-	C2	
		225/70R15C	112/110	R		BluEarth-Van All Season RY61			C	B	B	73	√	-	C2	
65		205/65R15C	102/100	T		BluEarth-Van All Season RY61			D	B	B	73	√	-	C2	
		215/65R15C	104/102	T		BluEarth-Van All Season RY61			D	B	B	73	√	-	C2	
75		185/75R16C	104/102	R		BluEarth-Van All Season RY61			D	B	B	73	√	-	C2	
		195/75R16C	107/105	R		BluEarth-Van All Season RY61			D	B	B	73	√	-	C2	
		195/75R16C	110/108	R		BluEarth-Van All Season RY61			C	B	B	73	√	-	C2	
		205/75R16C	110/108	R		BluEarth-Van All Season RY61			C	B	B	73	√	-	C2	
		215/75R16C	116/114	R		BluEarth-Van All Season RY61			C	B	B	73	√	-	C2	
		215/75R16C	113/111	R		BluEarth-Van All Season RY61			C	B	B	73	√	-	C2	
65	16	225/75R16C	121/120	R		BluEarth-Van All Season RY61			C	B	B	73	√	-	C2	
		195/65R16C	104/102	T		BluEarth-Van All Season RY61			D	B	B	73	√	-	C2	
65		205/65R16C	107/105	T		BluEarth-Van All Season RY61			D	B	B	73	√	-	C2	
		215/65R16C	109/107	T		BluEarth-Van All Season RY61			C	B	B	73	√	-	C2	
		225/65R16C	112/110	R		BluEarth-Van All Season RY61			C	B	B	73	√	-	C2	
		235/65R16C	115/113	R		BluEarth-Van All Season RY61			C	B	B	73	√	-	C2	
60		235/65R16C	121/119	R		BluEarth-Van All Season RY61			C	B	B	73	√	-	C2	
		195/60R16C	99/97	H		BluEarth-Van All Season RY61			D	B	B	73	√	-	C2	
60		215/60R16C	103/101	T		BluEarth-Van All Season RY61			D	B	B	73	√	-	C2	
		215/60R17C	109/107	T		BluEarth-Van All Season RY61			C	B	B	73	√	-	C2	
55	17	225/55R17C	104/102	H		BluEarth-Van All Season RY61			D	B	B	73	√	-	C2	

Series	Inch	Tyre size designation	LI	SS	STD XL	Pattern	RPB	OE	See section "EU Tyre Label" for detailed information on the tyre labeling icons.			Category	Comments			
YOKOHAMA WY01																
82	14	185R14C	102/100	Q		YOKOHAMA WY01			E	C	B	72	√	-	C2	
		195R14C	106/104	Q		YOKOHAMA WY01			E	C	B	72	√	-	C2	
		205R14C	109/107	Q		YOKOHAMA WY01			E	C	B	72	√	-	C2	
		215R14C	112/110	Q		YOKOHAMA WY01			E	C	B	72	√	-	C2	
65		175/65R14C	90/88	T		YOKOHAMA WY01			E	B	B	72	√	-	C2	
70	15	195/70R15C	104/102	R		YOKOHAMA WY01			E	C	B	72	√	-	C2	
		205/70R15C	106/104	R		YOKOHAMA WY01			E	B	B	72	√	-	C2	
		215/70R15C	109/107	R		YOKOHAMA WY01			E	B	B	72	√	-	C2	
		225/70R15C	112/110	R		YOKOHAMA WY01			E	B	B	72	√	-	C2	
65		205/65R15C	102/100	T		YOKOHAMA WY01			E	B	B	72	√	-	C2	
		215/65R15C	104/102	T		YOKOHAMA WY01			E	B	B	72	√	-	C2	
75	16	185/75R16C	104/102	R		YOKOHAMA WY01			E	B	B	72	√	-	C2	
		195/75R16C	107/105	R		YOKOHAMA WY01			E	B	B	72	√	-	C2	
		195/75R16C	110/108	T		YOKOHAMA WY01			E	B	B	72	√	-	C2	
		205/75R16C	110/108	R		YOKOHAMA WY01			E	B	B	72	√	-	C2	
		215/75R16C	113/111	R		YOKOHAMA WY01			E	B	B	72	√	-	C2	
		215/75R16C	116/114	R		YOKOHAMA WY01			E	B	B	72	√	-	C2	
		225/75R16C	121/120	R		YOKOHAMA WY01			E	B	B	72	√	-	C2	
65		195/65R16C	104/102	T		YOKOHAMA WY01			E	B	B	72	√	-	C2	
		205/65R16C	107/105	T		YOKOHAMA WY01			E	B	B	72	√	-	C2	
		215/65R16C	109/107	T		YOKOHAMA WY01			E	B	B	72	√	-	C2	
		225/65R16C	112/110	R		YOKOHAMA WY01			E	B	B	72	√	-	C2	
		235/65R16C	115/113	R		YOKOHAMA WY01			E	B	B	72	√	-	C2	
60	17	235/65R16C	121/119	R		YOKOHAMA WY01			E	B	B	72	√	-	C2	
		215/60R16C	103/101	T		YOKOHAMA WY01			E	B	B	71	√	-	C2	
		235/60R17C	117/115	R		YOKOHAMA WY01			E	B	B	71	√	-	C2	

LI = Load Index Capacity SS = Speed Category Symbol STD = Normal Load Capacity XL = Extra Load RPB = Rim Protection Bar YOKOHAMA OE = Original Equipment

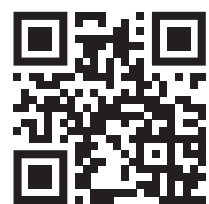
Category = C1: Passenger car tyres, C2: Light commercial vehicle tyres, C3: Heavy commercial vehicle tyres

√ = Tyre bears this pictogram, symbol or mark - = Tyre does not bear this pictogram, symbol or mark

● = Values for products in preparation (i.p.) will be published on www.yokohama.eu with the start of production.

See page "Technical Information / For your Comfort & Safety" about how to read the tyre code, technical details and recommendations for safe driving.

For information about the start and end date of production of available tyres, information about the tyre type identifier and further technical aspects, please refer to the official product information sheet, which can be provided to you by your tyre dealer. A link to the public part of the European product database for Energy Labelling (EPREL), where you can access the product information sheet and the EU tyre label, is also provided via the YOKOHAMA website (www.yokohama.eu).



www.yokohama.eu